

Assembly Instructions for P-1000

- 1) Lay glass flat, smooth side up on assembly table supporting glass on far side as shown, so hinge rail can be driven into place. (Diagram C) Apply glazing vinyl (Item a), starting at corner #1, all the way to opposite corner (corner #3). Notch glazing vinyl at corner #2. (See Blowup 1)
(Note: Assembly of a hinge left door is shown below. For hinge right door, place glazing vinyl and bottom rail assembly at opposite end.)
- 2) Hold hinge rail (Item b) in place (side with screw heads facing up) and drive hinge rail onto the glazing vinyl and glass using a block and a hammer (Item c). Hinge rail should be even with the glass at the top of the unit and extend past the glass on the bottom of the unit. (Note: The tolerances on glass, aluminum and vinyl may cause the hinge rail to fit too tight to drive on. In this case, back off each screw one turn and with a small paint brush apply a very weak solution of liquid soap and water to inside of hinge rail. Important: Do not use other types of lubrication or allow lubrication to get in between vinyl and glass as it may cause the glass to slide out of the hinge rail.)
- 3) Hold bottom rail (Item d) in place against glazing vinyl and drive onto the glass using a block and hammer. Start three #6 x 7/32" P.T.H. Type B screws (Item e) into bottom rail. Insert sweep vinyl (Item f) and drip rail (Item g) into the bottom rail and secure by tightening the three #6 x 7/32" P.T.H. Type B screws. Insert drip rail plug (Item h) into the end of drip rail opposite the hinge rail side. (Note: Drip rail should be installed so it is flush with notch in bottom rail and slopes down at the hinge rail side so that water will drain back into the shower when door is opened. The sweep vinyl should extend all the way to the end of the bottom rail.)
- 4) Place pivot pins (Item i) into the ends of the hinge rail (threaded side goes into the hinge rail). (See Blowup 2) Attach caps (Item j) onto the aluminum clips (Item k). (See Blowup 3) Push one clip into the hinge jamb about half way on one end and drive the other clip all the way in at the other. (Diagram B) Align the hinge jamb with the hinge rail. The hole in the cap should fit over the pivot pin that is in place in the hinge rail. Place the end with the clip all the way in, onto the pivot pin. Do the same on the other end and drive that clip all the way into the hinge jamb. This will secure the hinge jamb to the hinge rail.

DIAGRAM A

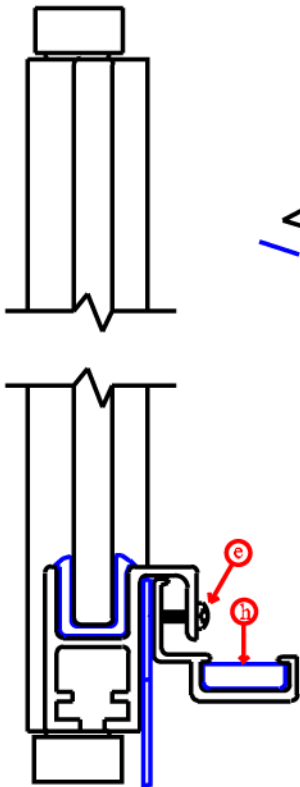


DIAGRAM B

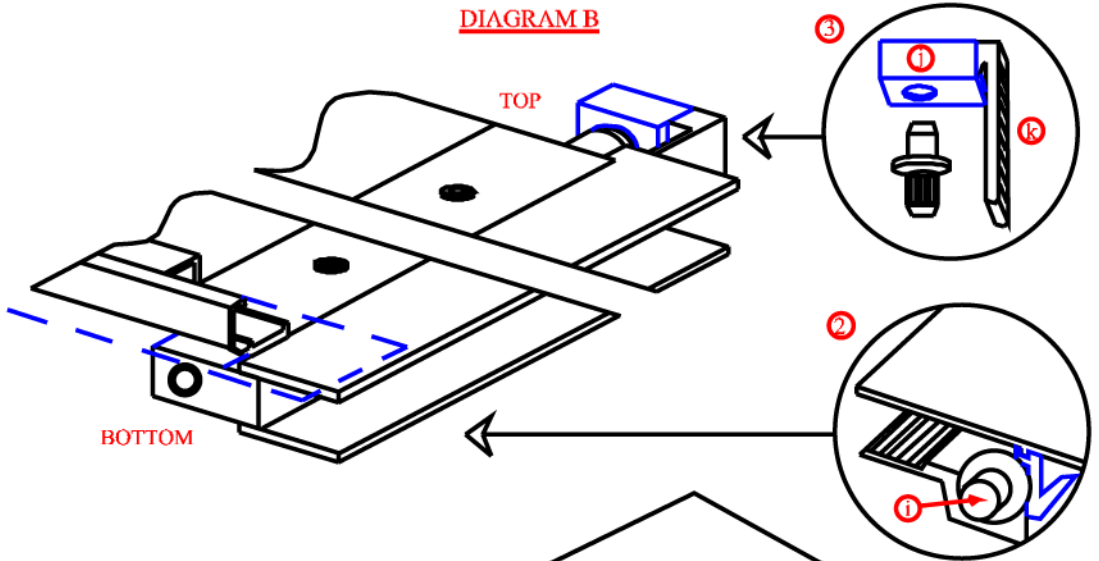


DIAGRAM C

